

ezzyello

Drainage Fittings



- BS 5255
- BS 4514
- BS 4660



ISO 9001

Produced from 100% virgin uPVC material

Ezyflo fittings are produced to the highest quality standards under an ISO 9001 Quality Assurance System and are supplied with female solvent weld sockets. They are fully compatible with the full range of National Plastic soil and underground pipe. They are also colour co-ordinated with the pipe to provide a uniform drainage network.

Bends and Branches are also available with screwed access caps to allow access to the system for cleaning and maintenance purposes.

Soil (Solvent Cement) L.Grey & 82mm and above (Underground Drainage) Brown



Branch F/F

36 mm x 88*	Y-JU-036-2F
43 mm x 88*	Y-JU-043-2F
55 mm x 88*	Y-JU-055-2F
82 mm x 88*	Y-JU-082-2F
110 mm x 88*	Y-JU-110-2F
160 mm x 88*	Y-JU-160-2F
200 mm x 88*	Y-JU-200-2F
200 mm x 110 x 88*	Y-JU-200/110-2F
200 mm x 160 x 88*	Y-JU-200/160-2F



Bend F/F

36 mm x 45*	Y-45BD-036-2F
43 mm x 45*	Y-45BD-043-2F
55 mm x 45*	Y-45BD-055-2F
82 mm x 45*	Y-45BD-082-2F
110 mm x 45*	Y-45BD-110-2F
160 mm x 45*	Y-45BD-160-2F
200 mm x 45*	Y-45BD-200-2F



Bend F/F

36 mm x 88*	Y-BD-036-2F
43 mm x 88*	Y-BD-043-2F
55 mm x 88*	Y-BD-055-2F
82 mm x 88*	Y-BD-082-2F
110 mm x 88*	Y-BD-110-2F
160 mm x 88*	Y-BD-160-2F
200 mm x 88*	Y-BD-200-2F



Coupler F/F

36 mm	DR-CU-036-2F
43 mm	Y-CU-043-2F
55 mm	Y-CU-055-2F
82 mm	Y-CU-082-2F
110 mm	Y-CU-110-2F
160 mm	Y-CU-160-2F
200 mm	Y-CU-200-2F



Access Bend F/F

43 mm x 88*	Y-BD-043-2FA
55 mm x 88*	Y-BD-055-2FA
82 mm x 88*	Y-BD-082-2FA
110 mm x 88*	Y-BD-110-2FA
160 mm x 88*	Y-BD-160-2FA



Access Branch F/F

43 mm x 88*	Y-JU-043-2FA
55 mm x 88*	Y-JU-055-2FA
82 mm x 88*	Y-JU-082-2FA
110 mm x 88*	Y-JU-110-2FA
160 mm x 88*	Y-JU-160-2FA



Reducer Bush

43 mm x 36 mm	Y-ERB-043/036F
55 mm x 43 mm	Y-ERB-055/043F
110 mm x 55 mm	Y-ERB-110/055F
110 mm x 82 mm	Y-ERB-110/082F
160 mm x 110 mm	Y-ERB-160/110F



Y Branch F/F

36 mm	Y-YJU-036-2F
55 mm	Y-YJU-055-2F
82 mm	Y-YJU-082-2F
110 mm	Y-YJU-110-2F
160 mm	Y-YJU-160-2F
160 x 110 mm	Y-YJU-160/110-2F



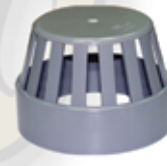
Double Swept Branch

110 mm x 88*	Y-DJU-110-2F
160 mm x 110 x 88*	Y-DJU-160/110-2F



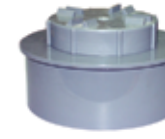
Floor Gully Body

110 x 82 x 55 mm	Medium (60mm) Y-GU-082-2F
110 x 82 x 55 mm	Large (70mm) Y-GU-082-2F/L
110 x 82 x 43 mm	Large (70mm) Y-GU-082/043F



Vent Cowl

55 mm	Y-VC-055 F
82 mm	Y-VC-082 F
110 mm	Y-VC-110 F
160 mm	Y-BD-160 F



Access Cap

43 mm	Y-AC-043 A
55 mm	Y-AC-055 A
82 mm	Y-AC-082 A
110 mm	Y-AC-110 A
160 mm	Y-AC-160 A



Access Pipe F/F

110 mm	Y-AP-110-2F
160 mm	Y-AP-160-2F



P Trap

110 mm	Y-PT-110-F-8R
--------	---------------



Invert Reducer

110 x 82 mm	Y-IRB-110/82 F
160 x 110 mm	Y-IRB-160/110 F

The main features :

- Strong and resistant to impact
- Easy to install and compatible with National Plastic drainage pipe
- Fully compliant to the BS standards
- Resistant to a wide range of chemicals / fluids
- Smooth bore to give excellent flow characteristics

Specifications -

Standards :
BS 4514 (Light Grey)
BS 4660 (Brown)

Material :
100% uPVC

Joints :
Female solvent weld sockets

Temperature Range :
0 °C - 85 °C
(for intermittent discharge)

Tensile Strength :
Min. 45 N/mm²

National Plastic & Building Material Industries L.L.C

P.O. Box 1943, Sharjah, U.A.E., Tel : +971(6)533-1830 / Fax : 533-5629 / e-mail : npbmi@emirates.net.ae / website : www.national-plastic.com